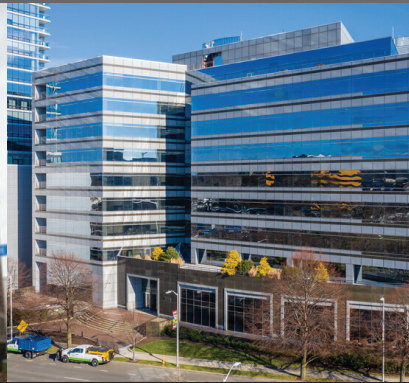


OmegaFlex®

Renovation • Repair • Replacement • Relocation



**HOTEL TO APARTMENT
CONVERSION**



**GENERATOR
REPLACEMENT**



**NEW OXYGEN TANK
REPLACEMENT**



**FACTORY TO CONDO
CONVERSION**

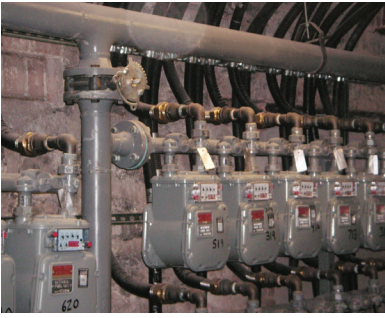
Omega Flex brand flexible corrugated metal piping products for medical gas, natural gas, LP gas, diesel and biofuels excel in maximizing speedy installations while minimizing downtime and lost revenue!

Available in long flexible lengths Omega Flex products can be pulled thru the ceiling and up walls which minimizes the need to deconstruct your facility! The long continuous lengths also allow the ability to install your piping with no fittings behind the wall or above in the ceiling.

This reduces both labor and rebuilding costs over rigid piping systems!

omegaflexcommercial.com

For more information, see back cover.



TracPipe® CounterStrike® *Flexible Gas Piping by OmegaFlex®*

TracPipe® CounterStrike® Piping System for LP and Natural Gas
A cost-effective and installer friendly gas piping system.

H&M Plumbing contracted to handle the gas piping for this design/build project, and specified CounterStrike® CSST for its labor saving potential over black iron pipe. According to David Morrison, President of H&M, "we saved \$270,000 by using CounterStrike® instead of black iron pipe".

For more information see Hotel Lafayette Case Study.



DoubleTrac® *Easy Installation. Zero Permeation.*

DoubleTrac® double containment piping for Diesel, Gasoline and Biofuels
A cost-effective petroleum piping solution available - easy to install with zero permeation.

Installing an AST at street level and a backup generator on the roof top of a building are fairly easy to accomplish. The challenge is installing the fuel piping throughout the building that connects the AST to the backup generator. In the past most piping was rigid piping that had to be threaded or welded together in 10-20 ft sections. The process of installing rigid pipe throughout buildings caused additional construction requirements and the labor costs were excessive.

For more information see Emergency Backup Generators Case Study.



MediTrac® *Flexible Medical Gas Piping by OmegaFlex®*

MediTrac® Corrugated Medical Gas Tubing for Healthcare Use
CMT represents the next generation of copper tubing for medical gas distribution.

The contractor New England Air Systems was hired to install the underground oxygen main line. Installing traditional cleaned and capped copper was going to greatly disrupt facility traffic because of the need to test and inspect each brazed joint prior to sleeving the section. Cleaned and capped copper would require the trench to be open for weeks.

For more information see Northwestern Medical Center Case Study.



TracPipe PS-II® *Polyethylene-Steeved Flexible Gas Piping by OmegaFlex®*

TracPipe PS-II for Underground LP and Natural Gas Piping Applications

Proven in the field over the last decade, PS-II is perfect for gas installations in a variety of applications where speed, reliability and safety are paramount.

According to MACCO, the primary reason for choosing to go underground was to minimize potential construction coordination conflicts with other contracting service providers.

As a result, the install could be accomplished in a fraction of the time. In fact, MACCO estimated that it would have taken approximately 1200 hours to run 7500 feet of black iron pipe versus the 36 hours it took to run the PS-II.

For more information see Multi-Family Case Study.

To view Omega Flex entire product line, **visit omegaflex.com**
For more information on CounterStrike and TracPipe PS-II call **1-800-671-8622**
For MediTrac and DoubleTrac call **1-800-355-1039**

© Omega Flex, Inc. 2023

OmegaFlex®

Omega Flex, Inc.

451 Creamery Way • Exton, PA 19341

ISO 9001 Registered Company

OF-004 01/2023