

OmegaFlex®

New Build



**HIGH-RISE
INSTALLATION**



**GENERATOR
INSTALLATION**



**SCHOOL LAB
INSTALLATION**



**NEW CONDO
INSTALLATION**

Omega Flex brand flexible corrugated metal piping products for medical gas, natural gas, LP gas, diesel, gasoline and biofuels excel in maximizing speedy installations while minimizing downtime and lost revenue!

The perfect product for gas piping contractors who are confronted with either short lead times or manpower shortages. Corrugated metal gas piping products can be installed much faster over their rigid pipe equivalents! Plus Omega Flex offers advanced sizing services on all commercial projects free of charge.

omegaflexcommercial.com

For more information, see back cover.



CounterStrike® install to appliance.

TracPipe® CounterStrike®

Flexible Gas Piping by OmegaFlex.

TracPipe® CounterStrike® Piping System for LP and Natural Gas
A cost-effective and installer friendly gas piping system.

Our ability to deliver 3500 foot ½” reels as well as 2000 foot ¾” reels once again prevented huge amounts of waste as well as the need for couplings. The use of AutoSnap® fittings further deepened the savings by saving up to 5 minutes per fitting multiplied by nearly 600 fittings, or 30-60 man hours. Again, Don Fink estimated one week to tie all of the meters in to our pipe vs. 3-4 weeks if he used black iron pipe and is extremely pleased with the ease and speed of CSST vs. black iron pipe.

For more information see Condo Case Study.



Employees pulling the 2” DoubleTrac® piping (UGF-FSP-32) for the fuel oil return line.

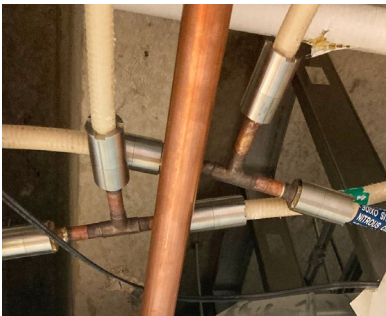
DoubleTrac®

Easy Installation. Zero Permeation.

DoubleTrac® double containment piping for Diesel, Gasoline and Biofuels
A cost-effective petroleum piping solution available - easy to install with zero permeation.

Utilizing DoubleTrac® piping for backup power generators, such as the Joan and Sanford I. Weill Neurosciences Building at UCSF, can be a benefit to the overall project. Southland Industries effectively installed DoubleTrac® fuel piping and has future plans to use DoubleTrac® piping for upcoming projects at UCSF. These projects include a research and academic building at Priscilla Chan, Mark Zuckerberg San Francisco General Hospital.

For more information see VC San Francisco Generator Case Study.



½” MediTrac® Tees during Installation.

MediTrac®

Flexible Medical Gas Piping by OmegaFlex®

MediTrac® Corrugated Medical Gas Tubing for Healthcare Use
CMT represents the next generation of copper tubing for medical gas distribution.

JPI estimated over 60-man hours to complete the installation with traditional materials because of the difficult working environment, required fire watch and site availability. JPI completed the installation of the MediTrac® system in a total of 12-man hours, including the pre-fabrication done off-site - without brazing and the need for a fire watch.

For more information see High-rise Case Study.



TracPipe PS-II

Polyethylene-Steeved Flexible Gas Piping by OmegaFlex®

TracPipe PS-II for Underground LP and Natural Gas Piping Applications
Proven in the field over the last decade, PS-II is perfect for gas installations in a variety of applications where speed, reliability and safety are paramount.

PS-II became an immediate success for installation of gas lines to school laboratory tables when contractors, then engineering firms realized that this was the safest, most economical method of piping gas under school laboratories, the system offers many safety features over then current practice.

For more information see School Lab Case Study.

To view Omega Flex entire product line, **visit omegaflex.com**
For more information on CounterStrike and TracPipe PS-II call **1-800-671-8622**
For MediTrac and DoubleTrac call **1-800-355-1039**

© Omega Flex, Inc. 2023

OmegaFlex®

Omega Flex, Inc.

451 Creamery Way • Exton, PA 19341
ISO 9001 Registered Company
OF-006 01/2023